

The background of the advertisement is a vast, golden desert landscape under a bright, hazy sky. The foreground and middle ground are filled with rolling sand dunes, their ridges and valleys creating a rhythmic pattern of light and shadow. The sky is a pale, warm yellow, suggesting a bright sun or a clear, hot day. The overall mood is one of vastness and heat.

thermatur ... reloaded!

tradition. innovation. quality.



thermatur m250+
microwave

thermatur 200+
shortwave

High frequency therapy



thermatur 200+ (shortwave) and thermatur m250+ (microwave) applications:

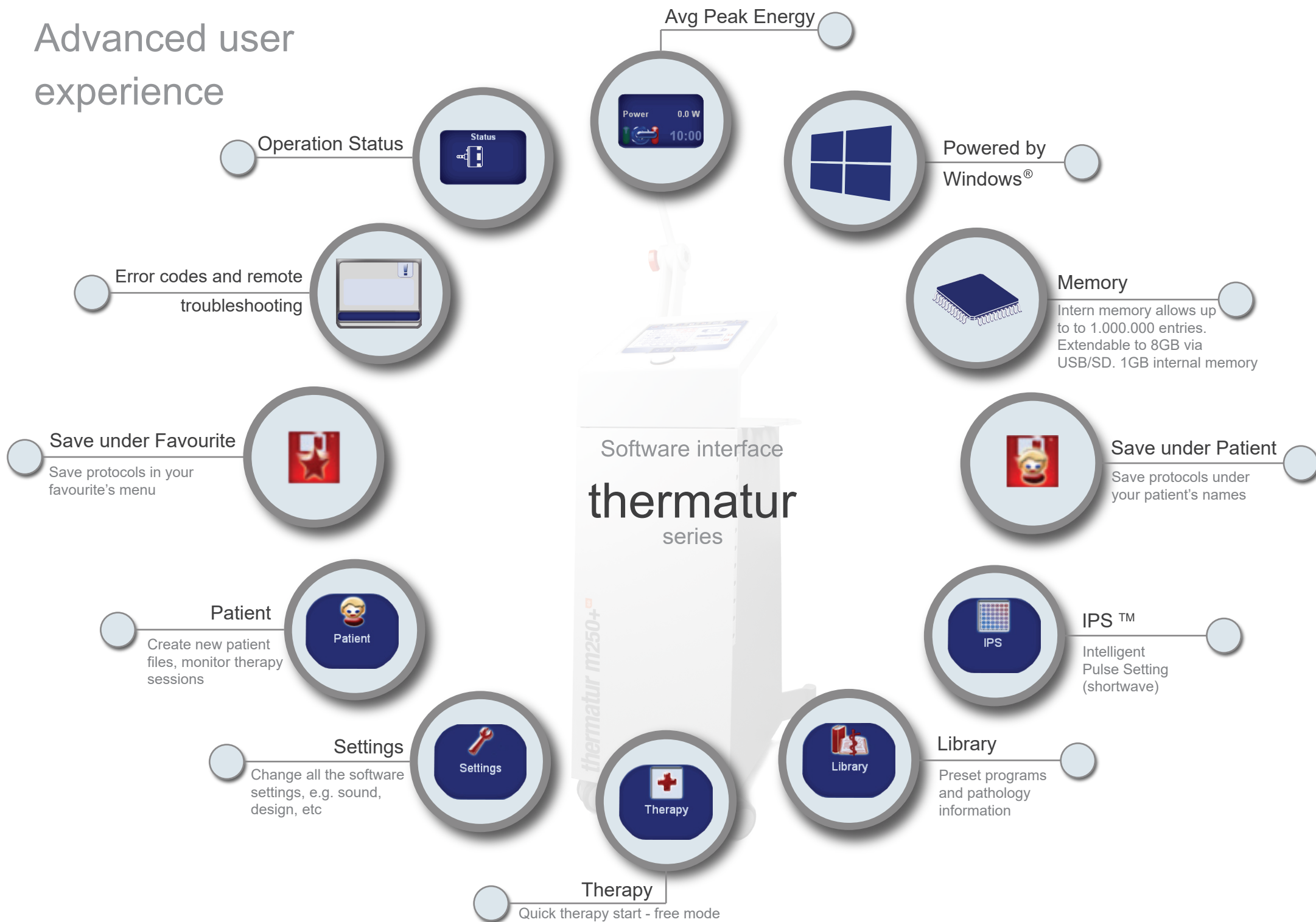
- Rehabilitation
- Orthopedics
- Neurology
- Sports Medicine
- Dermatology (wounds, burns and scars)
- Gynaecology
- Internal Medicine
- Urology

The technology is used in physiotherapy to treat:

- arthritis
- back pain
- fibromyalgia
- myositis
- neuralgia
- sprains and strains
- tenosynovitis
- tendonitis
- bursitis



Advanced user experience



Features



Uniquely designed arms: **Simple and flexible**



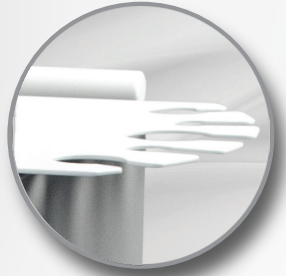
Large coloured touch screen



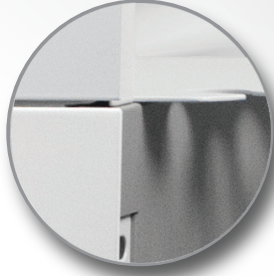
USB ports for technical support, software upgrades and backup



Dual **dynamic** control of software



Ergonomic holder tray for accessories



Robust, still elegant metal construction



Large wheels for **mobility**

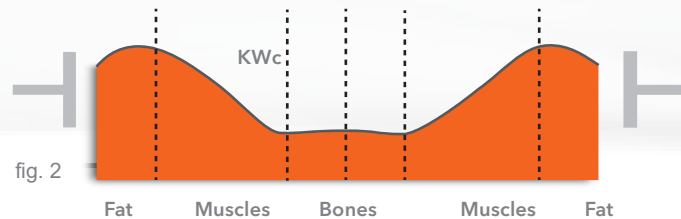
thermatur 200+



thermatur 200+ is a versatile shortwave unit with an automatic tuning function, suitable for continuous and pulsed therapy. The shortwave therapy ensures a deep but comfortable heat radiation.

The specially designed microprocessor controls the different parameters such as intensity, continuous and pulsed mode, treatment time as well as the patient safety system. Additional features are:

- simply adjustable electrodes and arms
- no heat damage of the electrode cables at contact
- flexible silicone-rubber capacitor-field electrodes
- exchangeable Schliephake capacitor-field electrodes



Possibilities of Treatment

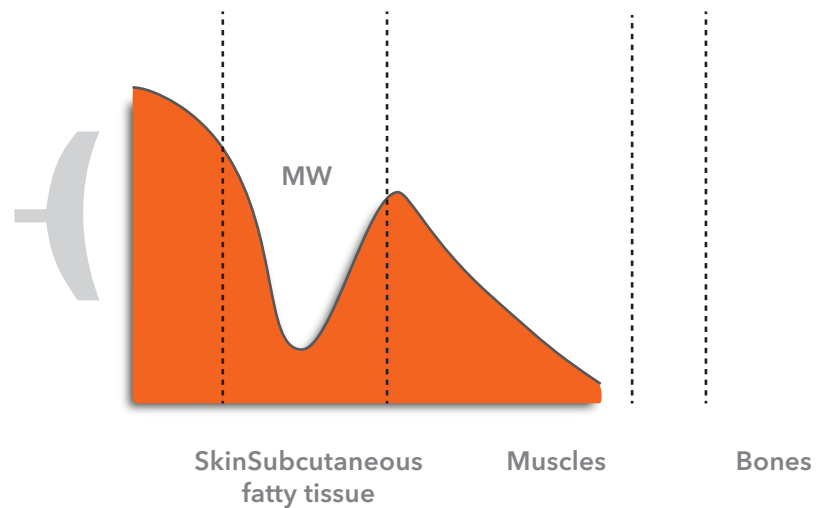
With the Schliephake capacitor-field method (fig. 2) the treated body parts are positioned between two electrodes. The electric field energy applied is converted into heat energy within the fat tissue. From there the heat flows into the muscular tissue. With the coil-field method (fig.1) the heat is precisely transported to the locations mostly required: to the muscular tissues.

thermatur m250+

With the variety of different radiators, the microwave treatment offers a diverse field of applications. The produced heat can be reduced by increasing the distance between the radiator and the treatment site.

The microwave radiation can be focused and is therefore excellently applicable for treating locally specific body parts. Thus, it is particularly suitable for the otolaryngology, dental and orthodontic medicine. For these fields microwave is preferred over shortwave.

Within the body, microwaves execute thermal (i.e. heat) and extrathermal (i.e. vibration) physico-chemical processes.



The microwave radiation is converted into heat in the skin tissue and subcutaneous muscle tissue, since it penetrates deeper into the tissue compared to the infrared radiation.

By applying pulsed mode more energy can enter the muscular tissue, without having an intense thermal effect that for a large number of pathologies should be avoided.



Accessories

thermatur 200+



13 cm Ø Diameter



Pads 12 x 18 cm



Cables

thermatur m250+



Conical



Large Field



Long Field



Optional wooden table for shortwave therapy

Specifications

	thermatur 200+ Shortwave	thermatur m250+ Microwave
Software		
Therapy protocols	Yes	Yes
Patient database integrated	Up to 1 million entries expandable	Up to 1 million entries expandable
Application guide	Yes	Yes
Operational system	Windows CE	Windows CE
Anatomical library	Yes	Yes
Timer	1 - 60 min	1 - 60 min
Design		
Weight	52 kg	51 kg
Dimensions (w x h x l)	430 x 1100 x 450 mm	430 x 1100 x 450 mm
Display device	Graphic colour touch screen 12.1" / 30.7 cm	Graphic colour touch screen 12.1" / 30.7 cm
Energy supply		
Net	110 – 230VAC / 50-60Hz	110 – 230VAC / 50-60Hz
Equipment protection	Protection Class I / Protection degree IP20	Protection Class I / Protection degree IP20
Externally replaceable fuses	6A	6,3A (230 V~), 10A (110V~)
Power switch according to IEC 60601-1	Yes	Yes
Classification		
Applied section	type BF	type BF
Class according to with MDD 93/42/EEC	Ila	Ila
Operation settings		
Operational frequency	27,12 MHz ± 0,6%	2450 MHz
Operational modes	Continuous / pulsed	Continuous / pulsed
HFpeak output (W)	400 / 1000	250 / 1600
Pulse frequency (Hz) Pulse	10, 25, 50, 100, 200, 400, 600, 800	N/A
Pulse duration	20, 40, 65, 100, 200, 400 (µs)	Duty cycle 10% - 90%